

# CONNECTED CONTROLLER



Advanced automation gateway for Property Management, Smart Home, and Industry 4.0 Applications.

Tantiv4's connected controller is secure, easy to install smart gateway supporting industry standard protocols. Works seamlessly with Tantiv4's Shield Automation and Management system. The connected controller ensures proper safety for the apartment or multi-housing communities or office and factory building and protects from natural disasters such as Fire and Water in addition to intruders. An easy to use mobile app provides flexibility to automate scenes for users and simplifies daily occurring routine actions with a push of a button. Scenes can be customized such as morning, evening or bed-time which control devices that turns on or off alarms, draws the blinds up or down, sets the thermostat to desired temperature. Connection with the Shield management system ensures that notifications are received when an unwanted event happens such as a water leak in a bathroom. This controller and the management system reduces maintenance costs in addition to ensuring piece of mind for everyone involved



TANTIV4

Works with Shield Management System

# Many Use Cases



Lighting control and automation



Improved Home safety and security



Flexible access control with smart locks



Efficient energy management



Schedule your appliances according to your needs

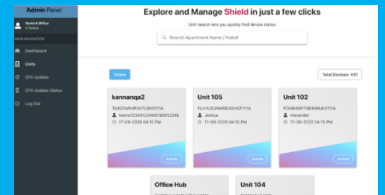
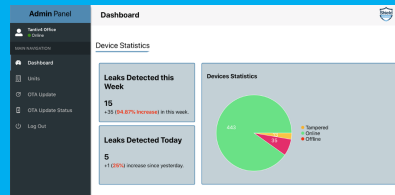


Smart switches for wireless control and automation



Notifications on event of water leaks, security break-ins, fire

## Tantiv4 Shield Automation and Management System



## Alert Methods



EMAIL



MOBILE PUSH MESSAGE



SMS • VOIP CALL • IFTTT

## Specifications

### Mechanical

Dimensions (HxWxD)mm  
124 x 90.5 x 22.2 mm

Mounting  
Table Top

### Use Indoor

Operating Temperature  
0 ~50 (32°F~122°F)

Relative Humidity  
10% ~ 95% RH

### Electrical

Input Power  
Micro USB Port DC 5V/1A

### Radio

Operating frequency Z-Wave  
868MHz

Operating frequency Wi-Fi  
2.4GHz